



**Faster and Quicker speed,
Upgraded functions**

**NEW
PRODUCT**

SRP-350plusII

BIXOLON SRP-350plusII is a 3inch thermal receipt printer to support your successful Business all the time. SRP-350plusII is fully featured with improved printing speed up to 250mm/sec and Smart BIXOLON software package. Easy-to-use Windows driver and other various drivers make BIXOLON SRP-350plusII even more flexible and modern. Quicker speed and better reliability, you can expect from a leading manufacturer. The modern design and small footprint enhance any environment.

HIGHLIGHTS

- Fast printing speed of up to 250mm per second
 - Optimized mechanical components and software to enable fast and stable printing
 - Improved CPU (32 Bit)
 - Larger memory capacity(16Kbytes)
 - Two color printing
- On board USB 2.0 Standard
 - Data cable included
- High speed USB 2.0
- Long lasting auto-cutter up to 1.8 million cuts with easy paper-jam removal
- Easy paper loading
- Customer oriented software tools
 - Virtual Memory Switch Manager (VMSM)
 - NV image download
- 2D barcode printing support
 - PDF417
 - QR Code
- Two different models
 - SRP-350plusIIC (with auto-cutter)
 - SRP-350plusIIA (without auto-cutter)
- Option 203dpi available
- Mac Driver support

PRODUCT FEATURES

Fast printing of text and images

To speed up customer transactions without sacrificing performance, the SRP-350plusII prints texts and graphics at a consistent speed of 250mm per second which is amazingly 25% faster than the industry leading the SRP-350plus.

The SRP-350plusII guarantees smooth and speedy printing without any interruptions during printing.

High-speed on board USB 2.0 standard

The SRP-350plusII has USB 2.0 interface on the main board as a standard and has an additional interface slot for an optional Serial, Parallel or Ethernet interface card. New POS systems are starting to be equipped with USB 2.0 but most thermal printers in the market only support version 1.1 of USB whose full speed is 12 Mbps. BIXOLON SRP-350plusII now supports the new USB 2.0 standard with a High Speed of 480 Mbps.



USB 2.0 on board

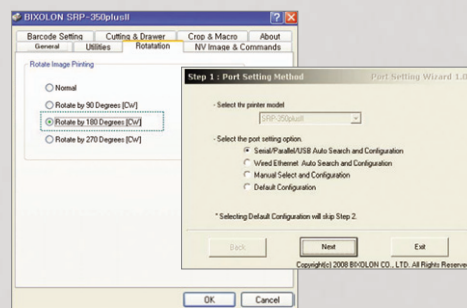
SRP-350 Series Interface Card Compatibility

Model	Serial	Parallel	USB	Ethernet
SRP-350	IFA-S	IFA-P	IFA-U	IFA-EP
SRP-350II	IFA-S	IFG-P	IFA-U	IFA-EP
SRP-350plus	IFA-S	IFG-P	N/A	IFA-EP
SRP-350plusII	IFA-S	IFG-P	N/A	IFA-EP

SRP-350plusII PSP (POS Software Package) Launcher Available

POS Software Package has many valuable and convenient functions.

Intelligent Interface Auto-installer, Reverse Printing (Rotation), Barcode Setting, Margin Crop (Paper saving function), Text & Image Macro, NV Image management all available.



Two different models

- SRP-350plusIIC (with auto-cutter)
- SRP-350plusIIA (without auto-cutter)

SPECIFICATIONS

PRINT

- PRINTING METHOD : Direct thermal
- PRINTING SPEED : 250mm/sec (SRP-352plusII : 230mm/sec)
- RESOLUTION : Standard : 180dpi(7dot/mm)
Optional : (SRP-352plusII) : 203dpi(8dot/mm)
- CHARACTER SIZE : Font A : 12 X 24 / Font B : 9 X 17 / Font C : 9 X 24
Korean : 24 X 24 / Chinese : 24 X 24
- CHARACTERS PER LINE :
SRP-350plusII - FontA:42/FontB:56/FontC:56,
Korean:21/Chinese:21
SRP-352plusII - FontA:58/FontB:64/FontC:64,
Korean:24/Chinese:24
- CHARACTER SET : Alphanumeric Character : 95
Extended Character : 128 X 37 pages
International Character : 32
- BARCODES :
1D : EAN-13, EAN-8, Code 39, Code 93, Code 128, ITF,
Coda Bar, UPC-A, UPC-E
2D : PDF417, QR Code

PAPER

- WIDTH : 80mm
- PAPER ROLL DIAMETER : Max Ø 83mm
- PAPER LOADING : Easy Paper Loading

RELIABILITY

- PRINTER UNIT : 70 million lines
- TPH : 150 Km
- AUTO CUTTER : 1.8 million cuts

INTERFACE : USB 2.0 on board / Serial(RS-232C) / Parallel (IEEE 1284) / Ethernet

RECEIVE BUFFER : 4 Kbytes

NV IMAGE MEMORY : 256 Kbytes(Mono)/128 Kbytes(Color)

USER DEFINE BUFFER : 12 Kbytes

EMULATION : ESC/POS™

DRIVER : Windows, OPOS, JPOS, Linux CUPS(Linux kernel 2.4.18 and later), Mac Driver(Mac OS X 10.4/10.5/10.6)

SENSOR : Paper Near End Sensor, Paper End Sensor, Cover Open Sensor

DRAWER PORT : 2 ports

POWER SUPPLY (SMPS) : AC 100~240V / DC 24V, 2.5A

DIMENSIONS : 145 X 195 X 146 (W X L X H mm)

OPERATING TEMPERATURE : 0 ~ 45°C

OPTION

- SMPS BUILT-IN COVER (RSB-350)
- WALL MOUNT (RWV-350)
- SPLASH PROOF COVER (RSC-350plus)
- BIXOLON MELODIST (RMB-100)
- VERTICAL STAND (RVS-350)

This publication contains product descriptions without obligation.

All features and specifications are subject to change without notice. January 2011

BIXOLON® www.bixolon.com

BIXOLON Headquarters

Address #A-5F, Digital Empire Building, 980-3, Yeongtong-dong, Yeongtong-gu, Suwon-si, Gyeonggi-do, 443-702, Korea
Tel +82 (0) 31 218 5500 Fax +82 (0) 31 218 5589
E-mail sales@bixolon.com

BIXOLON America Inc.

Address 3171 Fujita St Torrance, CA 90505
Tel +1 858 764 4580 Fax +1 310 257 6869
E-mail sales@bixolonusa.com

BIXOLON Europe GmbH

Address Tiefenbroicher Weg 35, 40472 Düsseldorf
Tel +49 211 68 78 54 0 Fax +49 211 68 78 54 20
E-mail sales@bixolon.de

BIXOLON Dongguan

Address #5 Luyi 2 Road, Tangxia Town, Dongguan City, Guangdong Province, P.R.China
Tel +86 769 8262 0704 Fax +86 769 8262 0703
E-mail sales@bixolon.com